

The Ultimate Guide to Automotive Diagnostic Trouble Codes And Their Meanings

Welcome to the ultimate guide on automotive diagnostic trouble codes (DTCs) and their meanings. Whether you are a car enthusiast or a regular vehicle owner, understanding these codes can save you time, money, and frustration when it comes to determining and resolving car problems.

What Are Diagnostic Trouble Codes?

Diagnostic Trouble Codes, commonly known as DTCs, are standardized codes that are used to identify and pinpoint issues within a vehicle's engine, transmission, or other systems. These codes provide valuable information to both technicians and car owners, indicating the specific problem area that needs attention.

Understanding the meaning behind these codes can help you determine the severity of the issue and whether it requires immediate attention or can be addressed later. It also gives you the ability to communicate effectively with your mechanic, ensuring they are aware of the problem before diagnosing and repairing your vehicle.



Automotive Diagnostic Trouble Codes and Their Meanings by Lisa Gentry (Kindle Edition)

★★★★☆ 4.4 out of 5

Language : English

File size : 395 KB

Text-to-Speech : Enabled

Enhanced typesetting : Enabled

Word Wise : Enabled

Lending : Enabled

Screen Reader : Supported



How Are DTCs Generated?

Modern vehicles are equipped with onboard diagnostic systems (OBD), which constantly monitor various systems and components. When an issue is detected, the OBD system generates a DTC to indicate the specific problem area.

These codes are primarily generated based on data provided by various sensors located throughout the vehicle. These sensors monitor everything from engine temperature to oxygen levels and fuel mixture. By comparing the expected values to the actual readings, the OBD system can identify abnormalities and generate DTCs accurately.

Breaking Down the DTC Structure

Diagnostic Trouble Codes are typically alphanumeric and consist of a series of letters and numbers. While each code is unique, they all follow a general structure, allowing easy interpretation and analysis.

Let's break down a code to understand its structure better:

P0412

The first character, "P," indicates the diagnostic system that the code belongs to. In this case, "P" stands for Powertrain, which includes the engine, transmission, and related systems.

The second character, "0," is a generic identifier which indicates the code's category. In this example, "0" indicates that the code is related to a fuel and air metering problem.

The remaining characters, "412," provide specific details about the issue. This is where the exact meaning of the code can be determined, allowing for accurate diagnosis and repair.

Common DTCs and Their Meanings

DTCs can vary across different vehicle makes and models. However, there are several common codes that tend to appear frequently. Here are a few examples:

P0300 - Random/Multiple Cylinder Misfire Detected

This code indicates that the engine is misfiring, meaning that one or more cylinders are not functioning properly. Common causes include faulty spark plugs, ignition coils, or fuel injectors.

P0420 - Catalyst System Efficiency Below Threshold (Bank 1)

This code suggests that the catalytic converter in your vehicle's exhaust system is not performing at optimal levels. A faulty oxygen sensor or a worn-out catalytic converter could be the culprits behind this issue.

P0171 - System Too Lean (Bank 1)

This code indicates that the air-to-fuel ratio in the engine's cylinders is imbalanced, resulting in a lean condition. Potential causes can include a clogged fuel injector, vacuum leaks, or a malfunctioning oxygen sensor.

Interpreting DTCs and Next Steps

When confronted with a DTC, it is crucial to understand that it is not the definitive answer to the problem, but rather a starting point for further investigation. These codes provide a hint as to what system or component is experiencing an issue, which helps narrow down the troubleshooting process.

Once you have retrieved a DTC, there are several steps you can take before seeking professional help:

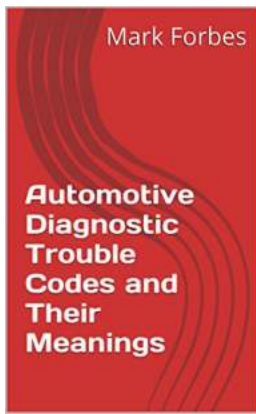
1. Research the specific code online to find possible causes and potential fixes.
2. Inspect and test related components, such as sensors or connectors, for visible issues.
3. Reset the code and monitor your vehicle to see if it reoccurs.

If the issue persists or you are unsure about the problem's severity, it is recommended to consult a qualified mechanic. They have the expertise and tools to perform thorough diagnostics and repairs, ensuring your vehicle returns to optimal performance.

Understanding automotive diagnostic trouble codes is an invaluable skill for any vehicle owner. It empowers you to make informed decisions about your car's maintenance and repair needs, allowing you to save time and money.

Remember, although DTCs provide valuable insights, they should not be solely relied upon for final diagnosis. If in doubt, always seek professional assistance to ensure the correct resolution of your car's issues.

So the next time you see that check engine light illuminate, you'll have a better understanding of the potential problem thanks to these automotive diagnostic trouble codes.



Automotive Diagnostic Trouble Codes and Their Meanings by Lisa Gentry (Kindle Edition)

★★★★☆ 4.4 out of 5

Language : English
File size : 395 KB
Text-to-Speech : Enabled
Enhanced typesetting : Enabled
Word Wise : Enabled
Lending : Enabled
Screen Reader : Supported
Print length : 99 pages

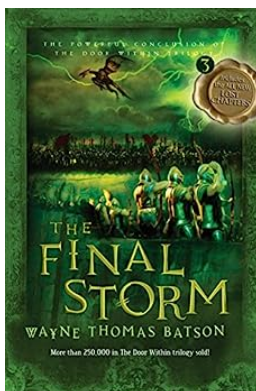


In this book a concise explanation of what an automotive diagnostic trouble code is, is given, also a list of more than 2000 codes are listed with what the code represents. The codes given are obd2/eobd codes.



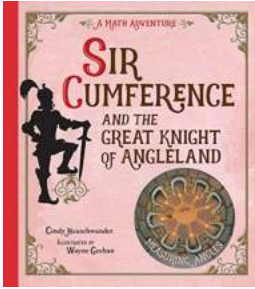
Unveiling the Extraordinary Tales of Bravery in Standing Tall

History has laid the foundations of our present and has shaped the world we live in today. From great empires to significant scientific discoveries, it is...



The Final Storm: The Door Within Trilogy Three

The Door Within Trilogy by Wayne Thomas Batson is an enchanting journey into the world of fantasy, captivating readers with its unique storytelling and memorable characters....



Sir Cumference And The Great Knight Of Angleland: Explore The Fascinating World Of Math

Once upon a time in a land not far away, there lived a brave and clever knight named Sir Cumference. He had a peculiar passion for all things mathematical, which made him...



The New Frontiers Of Sovereign Investment: Unlocking Global Potential

As the world continues to evolve and the global economy becomes increasingly interconnected, sovereign wealth funds (SWFs) have emerged as major players in the...



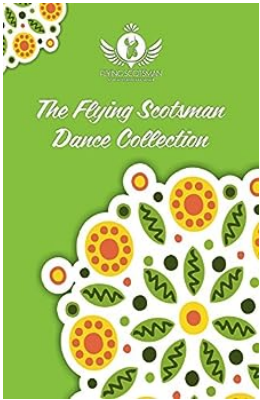
The Ultimate Guide to Automotive Diagnostic Trouble Codes And Their Meanings

Welcome to the ultimate guide on automotive diagnostic trouble codes (DTCs) and their meanings. Whether you are a car enthusiast or a regular vehicle owner, understanding...



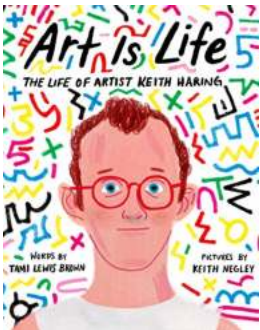
The Tremendous Baron Time Machine: The Bizarre Baron Inventions

Imagine a world where time travel is not just science fiction but a reality. A world where one man, known as the Bizarre Baron, pioneered the creation of...



The Flying Scotsman Dance Collection Vol.: Unleash Your Inner Dancer!

Do you have an irresistible urge to move your feet when you hear lively Scottish folk music? Are you always looking for new dance routines to master and perform? If you...



The Life of Artist Keith Haring: A Journey of Creativity, Activism, and Legacy

Keith Haring, an extraordinary artist, emerged from the streets of New York City in the 1980s, leaving an indelible mark on the art world and popular...

[automotive diagnostic trouble codes](#)

[automotive diagnostic trouble codes and their meanings](#)

[car diagnostic trouble codes](#)

[automotive diagnostic fault codes manual pdf](#)

[engine diagnostic trouble codes](#)

[automotive diagnostic trouble code p226c](#)

[car diagnostic error codes](#)

[car diagnostic fault codes](#)

[engine diagnostic fault codes](#)