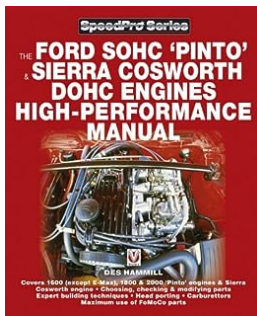


The Power Within: Exploring the Ford SOHC Pinto, Sierra Cosworth, and DOHC Engines

Imagine a world where power meets performance in a symphony of engineering brilliance. Picture cars that roar on the open roads, leaving behind a trail of awe and envy. Ford, one of the leading automobile manufacturers, has always been at the forefront of innovation, and the of their iconic engines, the Ford SOHC Pinto, Sierra Cosworth, and DOHC, have revolutionized the high-performance landscape.

The Ford SOHC Pinto engine, with its Single Overhead Cam design, was produced from 1970 to 2000. The Pinto represented a significant shift in Ford's engine technology, combining efficiency with power. With a displacement ranging from 1.3 to 2.3 liters, the SOHC Pinto engines proved to be versatile powerhouses in a variety of Ford models such as the Cortina, Taunus, and the Capri. These engines featured advanced overhead camshaft technology, providing improved valve control and higher efficiency compared to their predecessors.

Not to be outdone, Ford unveiled the Sierra Cosworth, a car that would change the way people perceived performance sedans. Powered by the DOHC (Double Overhead Cam) engine, the Sierra Cosworth became an instant hit and a symbol of the '80s. With its iconic whale-tail spoiler and aggressive lines, it turned heads wherever it went. The DOHC engine came in various displacement sizes, including the legendary 2.0-liter fuel-injected version. This powertrain was known for its exceptional power output and torque, allowing the Sierra Cosworth to reach blistering speeds.



The Ford SOHC Pinto & Sierra Cosworth DOHC Engines high-performance manual (SpeedPro series) by Des Hammill (Kindle Edition)

★★★★☆ 4.3 out of 5

Language : English
File size : 2564 KB
Text-to-Speech : Enabled
Screen Reader : Supported
Enhanced typesetting : Enabled
Print length : 144 pages
Lending : Enabled



What set these engines apart from the competition was not only their raw power but also their reliability. The Ford SOHC Pinto, Sierra Cosworth, and DOHC engines were built to withstand the test of time and demanding driving conditions. Whether you were looking for a spirited drive on the open road or a reliable engine for your daily commute, these powertrains offered the best of both worlds.

The Ford SOHC Pinto Engine: A Journey of Reliability and Performance

The Ford SOHC Pinto engine's excellence was showcased through its efficient design, which enabled optimal combustion and fuel efficiency. Whether you were driving on city streets or tackling sharp bends on a winding mountain road, the Pinto engine ensured a smooth and exhilarating experience. Its advanced valve control system allowed for precise timing and greater power delivery, making it a favorite among driving enthusiasts.

The engine's reliability was further enhanced by Ford's commitment to quality and engineering excellence. Each component was meticulously designed and tested

to withstand the rigors of high-performance driving. So, whether you were pushing the limits on a racetrack or embarking on a cross-country adventure, the Ford SOHC Pinto engine stood strong, ready to unleash its power at your command.

The Sierra Cosworth: A Legend in Performance Engineering

Enter the Sierra Cosworth, a car that elevated Ford's name in the performance car arena. Unveiled in 1986, the Sierra Cosworth boasted a DOHC turbocharged engine that sent shockwaves through the industry. This powertrain delivered unmatched performance, propelling the car to 60 mph in just a matter of seconds. The Sierra Cosworth became a symbol of power and speed, influencing countless car enthusiasts around the world.

The DOHC engine's innovative design provided exceptional power delivery, responsiveness, and durability. The turbocharged version packed a punch like no other, providing an adrenaline rush every time you put your foot on the gas pedal. The Sierra Cosworth showcased Ford's commitment to pushing the boundaries of performance engineering, delivering a driving experience that left its competitors in the dust.

The DOHC Engine: A Marvel of Engineering Ingenuity

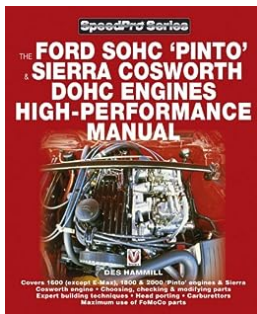
The DOHC engine design epitomizes the pinnacle of automotive engineering. With its dual overhead camshafts, the engine achieved unprecedented levels of performance and efficiency. The DOHC configuration allowed for better valve control, resulting in optimized airflow and higher power output.

The DOHC engine's ability to rev higher and generate more power made it a sought-after choice for racing enthusiasts and high-performance street cars. The engine's lightweight construction and advanced technology significantly

contributed to its success. Additionally, its double camshaft design improved valve timing accuracy, maximizing each combustion cycle to extract the most power from the fuel-air mixture.

: Power Redefined

The Ford SOHC Pinto, Sierra Cosworth, and DOHC engines have etched their names in automotive history as pioneers of power, performance, and engineering prowess. Their long-lasting impact has made them legendary powertrains that continue to inspire car enthusiasts to this day. Whether it's the smooth yet powerful ride of the SOHC Pinto, the adrenaline-pumping acceleration of the Sierra Cosworth, or the pure engineering marvel of the DOHC engine, Ford has left an indelible mark in the world of high-performance automobiles.



The Ford SOHC Pinto & Sierra Cosworth DOHC Engines high-peformance manual (SpeedPro series) by Des Hammill (Kindle Edition)

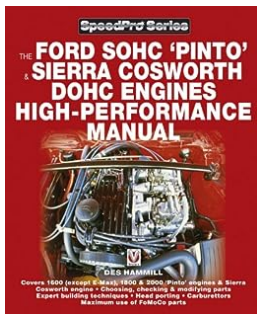
★★★★☆ 4.3 out of 5

Language	: English
File size	: 2564 KB
Text-to-Speech	: Enabled
Screen Reader	: Supported
Enhanced typesetting	: Enabled
Print length	: 144 pages
Lending	: Enabled



Build a reliable, high-performance 1600/1800/2000 'Pinto' engine for road/track, using many stock parts. Covers Cosworth versions of Pinto engines, too, and fitting Cosworth cylinder heads to Pinto blocks.

Expert practical advice from an experienced race engine builder on how to build a high-performance version of Ford's naturally aspirated 4-cylinder 1600, 1800 & 2000cc Pinto engine which has been used in Ford's most popular cars (Escort, Capri, Cortina & Sierra - Ford/Mercury Capri, Pinto, Bobcat in USA) over many years. Whether the reader wants a fast road car or to go racing, Des explains, without using technical jargon, just how to build a reliable high-power engine using as many stock parts as possible and without wasting money on parts and modifications that don't work. Also covers Cosworth versions of Pinto engines and fitting Cosworth heads to Pinto blocks. Does not cover 1300, E-Max 1600 or American-built 2300.



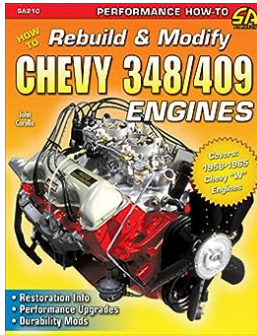
The Power Within: Exploring the Ford SOHC Pinto, Sierra Cosworth, and DOHC Engines

Imagine a world where power meets performance in a symphony of engineering brilliance. Picture cars that roar on the open roads, leaving behind a trail of awe and envy....



Inzanouts Charleston South Carolina Yatir Nitzany: Uncovering the Art Scene, Historical Charm, and Southern Hospitality

Disclaimer: This content is for informational purposes only. Any views or opinions represented in this article are personal and belong solely to the author. ...



The Ultimate Guide: How To Rebuild and Modify Chevy 348/409 Engines Design

When it comes to classic American muscle cars, the Chevy 348/409 engines are legendary. Known for their power, durability, and classic design, these engines...



The Sentimental Hippo and His Friends - A Heartwarming Tale of Friendship and Adventure

Once upon a time, in the heart of a lush jungle, there lived a sentimental hippo called Humphrey. He was large, kind-hearted, and had a heart full of love for his friends....



The Android Sisters Volume Changing Faces: The Ultimate Revolutionary Technology

Are you tired of your plain and monotonous smartphone experience? Do you feel limited by the restrictions imposed by your device's volume settings? Well, fret no more because...



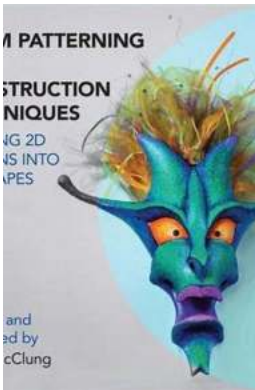
The Ultimate Guide on How To Make Soap At Home - Easy and Fun DIY Soap Recipes

Are you tired of using store-bought soaps packed with harmful chemicals? Have you ever considered making your own soap at home? Not only is homemade soap a healthier...



Everything You Need To Know About 2020 Kia Niro: The Eco-Friendly Compact SUV of the Future

When it comes to innovation and eco-friendly vehicles, Kia has established itself as a frontrunner in the automotive industry. The 2020 Kia Niro is no exception. Combining...



Turning 2D Designs Into 3D Shapes: Unveiling the Fascinating World of Dimensional Transformation

Have you ever looked at a 2D design and wondered how it would look in three dimensions? The concept of turning 2D designs into 3D shapes is a captivating process that has...