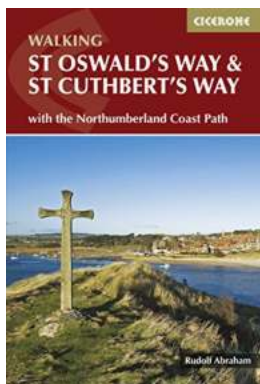


# The Mesmerizing Beauty of The Northumberland Coast Path: A Journey Worth Exploring



Do you often find yourself yearning for an escape from the chaotic city life? A tranquil getaway where you can immerse yourself in nature's beauty, experience breathtaking views, and embark on an adventurous journey? Look no further! With the Northumberland Coast Path, you can take a step back in time and explore one of Britain's most awe-inspiring long-distance trails.

The Northumberland Coast Path stretches for approximately 100 kilometers (62 miles) along the captivating North East coastline. Spanning from Cresswell in the south to Berwick-upon-Tweed in the north, this trail offers an unforgettable experience for nature lovers, history enthusiasts, and avid hikers alike.



## St Oswald's Way and St Cuthbert's Way: With the Northumberland Coast Path (British Long Distance Trails) by Rudolf Abraham (Kindle Edition)

★★★★☆ 4.7 out of 5

Language : English  
File size : 15879 KB  
Text-to-Speech : Enabled  
Screen Reader : Supported  
Enhanced typesetting : Enabled  
Word Wise : Enabled  
Print length : 192 pages



With its dramatic cliffs, unspoiled sandy beaches, and picturesque villages, the Northumberland Coast Path provides a captivating blend of natural beauty and rich heritage. Setting foot on this trail is like stepping into a postcard-perfect landscape that will leave you in awe at every turn.

### Discover Breathtaking Landscapes

As you embark on your journey along the Northumberland Coast Path, you will be treated to an array of breathtaking landscapes that will ignite your sense of adventure. From pristine sandy beaches to rugged cliffs and rolling sand dunes, this trail showcases the diverse beauty of the North East coast.

One of the highlights of the path is the stunning Bamburgh Castle. Dominating the landscape with its powerful presence, this medieval fortress stands proud on a rocky outcrop overlooking the North Sea. As you walk towards the castle, the views across the coastline will leave you speechless.

Continue your journey to the Farne Islands, a cluster of small islands teeming with wildlife. As you navigate the rocky terrain, you'll encounter thousands of seabirds, including puffins, guillemots, and razorbills. If you're lucky, you might even catch a glimpse of the adorable seal colonies that call these islands home.

## **Immerse Yourself in History**

The Northumberland Coast Path is not only a feast for the eyes but also a journey through time. This region is steeped in history, and the trail takes you past numerous historical landmarks that provide a glimpse into the past.

Alnwick Castle, famously known as the setting for Hogwarts in the Harry Potter movies, is another must-visit destination along the path. Explore the grandeur of this medieval castle, where history comes alive through interactive exhibits and fascinating stories told by knowledgeable guides.

Another gem along the trail is the atmospheric ruins of Dunstanburgh Castle. This 14th-century fortress is perched on a rocky headland and offers panoramic views of the surrounding landscape. The walk to the castle takes you through picturesque coastal scenery, immersing you in the heritage of Northumberland.

## **An Adventure for Everyone**

Whether you're an experienced hiker or a leisurely walker, the Northumberland Coast Path caters to all levels of fitness and ability. The trail offers a variety of

routes, ranging from gentle strolls to more challenging sections that will put your endurance to the test.

For those seeking a shorter adventure, the stretch between Craster and Low Newton-by-the-Sea is perfect. This 13-kilometer (8-mile) route takes you through charming fishing villages, offering glimpses of picturesque harbors and golden sands along the way.

If you're up for a more challenging endeavor, venture further along the path to experience the vast expanse of Sandwood Bay. This remote and wild stretch of coastline provides a true sense of wilderness and is a paradise for birdwatchers, nature enthusiasts, and solitude seekers alike.

## **Plan Your Journey**

Before embarking on your Northumberland Coast Path adventure, it's important to plan accordingly. Ensure you have suitable walking gear, including sturdy footwear, waterproof clothing, and plenty of water and snacks to keep you energized throughout the day.

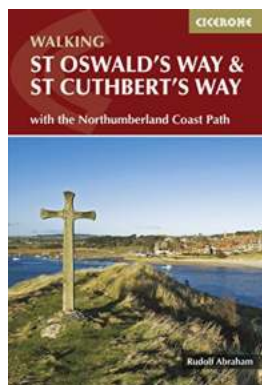
Whether you choose to complete the entire trail or explore specific sections, there are plenty of accommodation options along the way. From cozy bed and breakfasts to charming seaside cottages, you'll find a range of places to rest and rejuvenate after a day of exploration.

Don't forget to check the tide times and consider the availability of public transportation to ensure a smooth journey. The official Northumberland Coast Path website provides detailed information and maps to help you navigate your way along this captivating trail.

## **Embark on The Journey of a Lifetime**

The Northumberland Coast Path offers a truly unforgettable experience for anyone seeking an escape into nature's embrace. With its mesmerizing landscapes, rich history, and diverse wildlife, this trail is a treasure trove waiting to be explored.

So, lace up your hiking boots, pack your sense of adventure, and let the Northumberland Coast Path guide you on a remarkable journey along one of Britain's most enchanting long-distance trails. Get ready to create memories that will last a lifetime!



## St Oswald's Way and St Cuthbert's Way: With the Northumberland Coast Path (British Long Distance Trails) by Rudolf Abraham (Kindle Edition)

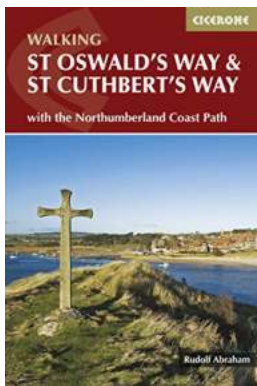
★★★★☆ 4.7 out of 5

Language : English  
File size : 15879 KB  
Text-to-Speech : Enabled  
Screen Reader : Supported  
Enhanced typesetting : Enabled  
Word Wise : Enabled  
Print length : 192 pages



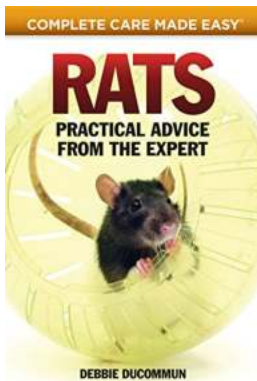
This guide describes two long-distance trails through the unspoilt scenery of Northumberland and the Borders. St Oswald's Way begins at Heavenfield and its 97 miles take in rolling farmland and the Simonside Hills before reaching the vast sandy beaches of the coast. The 62 mile St Cuthbert's Way begins at Melrose and crosses the rugged crags and heather moorland of the Cheviot Hills. Both trails pass through Northumberland National Park to converge on atmospheric Lindisfarne (Holy Island), before continuing up the coast to Berwick-upon-Tweed.

Each can be walked within a week, though there is scope for shortening or lengthening the stages to suit different itineraries. Also shown is the 64 mile the Northumberland Coast Path from Cresswell to Berwick, which covers the entire length of the Northumberland Coast AONB. The guidebook is crammed with interesting snippets of information, alongside indispensable practical details of transport and accommodation in the area. With varied scenery and a rich history encompassing spectacular castles, medieval abbeys and Roman remains, this is one of Britain's most beautiful corners to explore on foot.



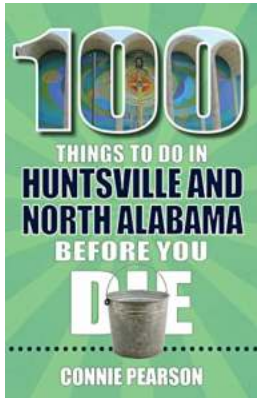
## **The Mesmerizing Beauty of The Northumberland Coast Path: A Journey Worth Exploring**

Do you often find yourself yearning for an escape from the chaotic city life? A tranquil getaway where you can immerse yourself in nature's beauty, experience breathtaking...



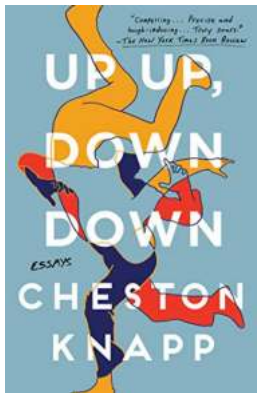
## **Practical Accurate Advice From The Expert Complete Care Made Easy**

When it comes to taking care of ourselves and our loved ones, accuracy and practicality are essential. However, finding reliable advice can sometimes feel overwhelming, as...



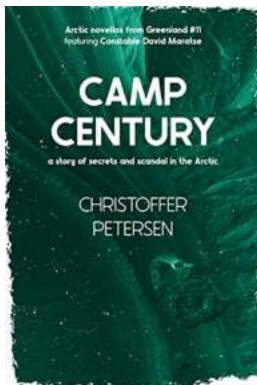
## Vancouver and Its Environs Travel Adventures

Are you an adventure enthusiast looking to explore the vibrant city of Vancouver and its beautiful surroundings? Look no further! Vancouver, situated on the west...



## The Ultimate Guide to Up Up Down Down Essays: Unveiling the Depth of Video Game Analysis

Are you a passionate gamer who has always been intrigued by the stories and messages behind video games? Have you ever wondered what lies beneath the surface of these...



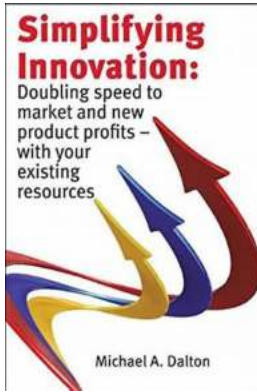
## Short Story Of Secrets And Scandal In The Arctic Greenland Crime Stories 11

The Arctic Greenland is known for its serene and untouched beauty, but beneath its icy surface lies a world of secrets and scandal that few dare to explore. In this...



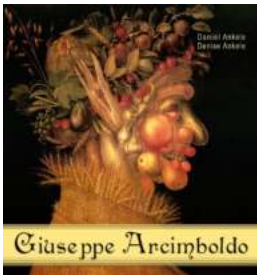
## Baby Item Crochet Ideas - 20 Adorable and Easy Patterns

Are you looking for some adorable crochet patterns for baby items? Look no further! In this article, we will present you with 20 easy and heartwarming crochet patterns that...



## **Doubling Speed To Market And New Product Profits With Your Existing Resources**

In today's fast-paced business environment, it's becoming increasingly important for companies to quickly bring new products to market. The ability to do so can be a...



## **Discover the Astonishing and Abstract World of Giuseppe Arcimboldo: 140 Mannerist Paintings**

Giuseppe Arcimboldo, the Italian artist renowned for his unique and unconventional style, created a legacy of 140 Mannerist paintings that continue to captivate art...