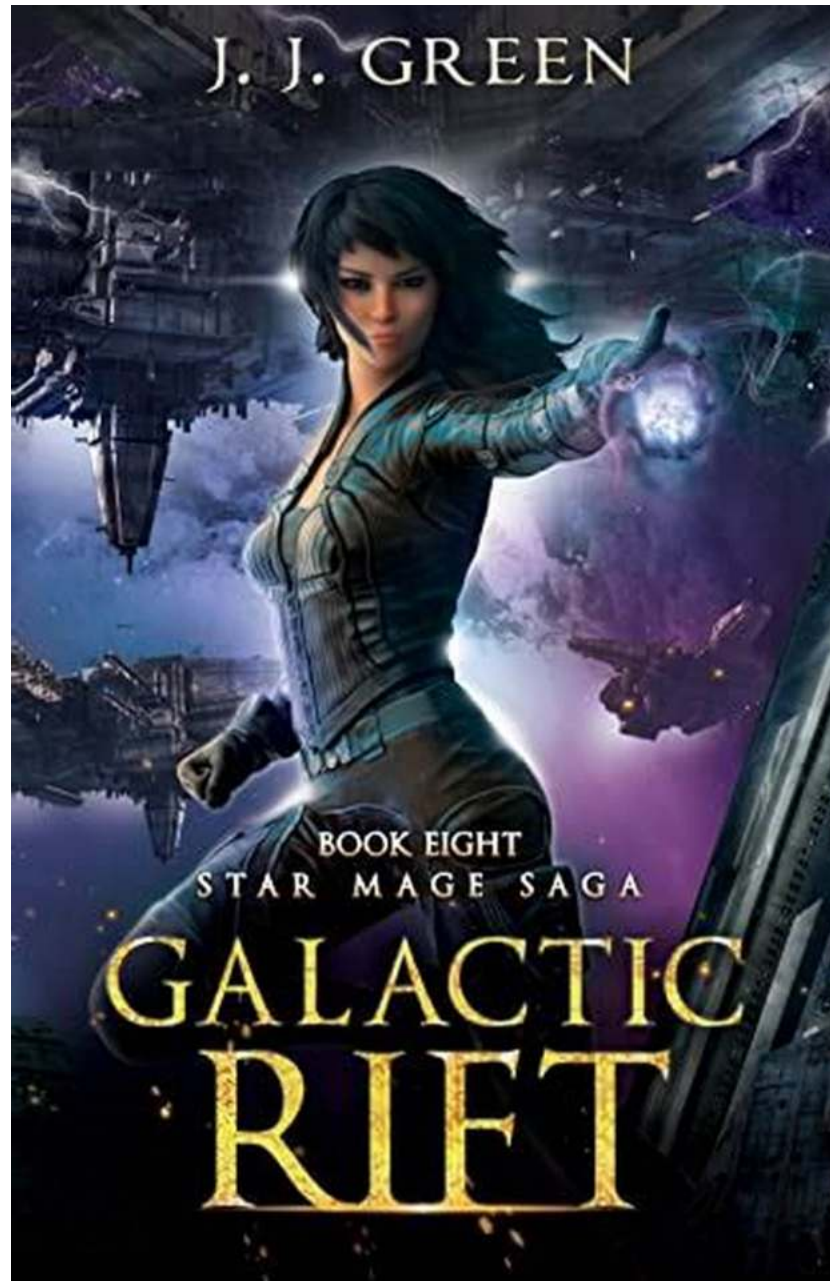


# The Galactic Mage: A Brilliant Blend of Fantasy and Science Fiction



In the vast realm of speculative fiction, often divided into the realms of fantasy and science fiction, it's not every day that you come across a literary work that successfully blends both genres, capturing the hearts of readers from both

camp. However, that is precisely what Austin J. Bailey's *The Galactic Mage* has accomplished.

## The Concept

*The Galactic Mage* introduces us to the intriguing character of Altin, a struggling graduate student who unexpectedly finds himself transported to another universe filled with powerful magic and advanced technology. This unique fusion of fantasy and science fiction elements sets the stage for an unforgettable adventure.



## The Galactic Mage (The Galactic Mage Series

**Book 1)** by John Daulton (Kindle Edition)

★★★★☆ 4.2 out of 5

Language	: English
File size	: 3062 KB
Text-to-Speech	: Enabled
Screen Reader	: Supported
Enhanced typesetting	: Enabled
Word Wise	: Enabled
Print length	: 533 pages
Lending	: Enabled
X-Ray	: Enabled



## The World-Building

One of the key aspects that make *The Galactic Mage* so engaging is not only the perfect balance between magic and technology but also the intricate world-building. Bailey's attention to detail is impeccable, presenting readers with a fully fleshed out universe that is immersive and brimming with life.

From the vivid descriptions of different planets, each with its own unique landscapes and cultures, to the societal structures and political dynamics, the author takes readers on a journey through a universe that feels real and tangible.

## **The Characters**

The characters in *The Galactic Mage* are as diverse as the worlds they inhabit. Altin, the protagonist, is a relatable and likable character who undergoes significant growth throughout the story. His struggles with adapting to a new world and harnessing his magical abilities allow readers to connect with him on a deeper level.

Other characters, such as Orli, a powerful sorceress, and Aern, a military officer, add depth to the story and play vital roles in Altin's journey. The development of these characters, alongside their unique personalities and motivations, keeps readers invested in the narrative.

## **The Blend of Fantasy and Science Fiction**

What truly sets *The Galactic Mage* apart is the seamless integration of fantasy and science fiction elements. Bailey manages to strike a delicate balance between wizards casting spells and spaceships soaring through the cosmos.

Readers who appreciate the awe-inspiring moments of space exploration will find themselves captivated by the vast possibilities of futuristic technology. At the same time, fans of high fantasy will revel in the intricate magic systems and mythical creatures that exist within this parallel universe.

## **The Themes**

While *The Galactic Mage* is an exhilarating adventure filled with epic battles and fantastical encounters, it also tackles deeper themes such as self-discovery,

friendship, and the consequences of power. The narrative prompts readers to reflect on their own journeys and the choices they make along the way.

The exploration of these themes, alongside the richly woven plot, adds layers of complexity to the story, elevating it beyond a mere genre mash-up. It will leave readers contemplating the implications long after they have turned the final page.

## In

*The Galactic Mage* is a masterfully crafted novel that effortlessly blends the worlds of fantasy and science fiction. With its immersive world-building, compelling characters, and thought-provoking themes, it is a must-read for fans of both genres.

So, whether you are a long-time lover of fantasy, or a dedicated science fiction enthusiast, take a leap into the extraordinary and embarking journey that awaits in *The Galactic Mage*.



## The Galactic Mage (The Galactic Mage Series

**Book 1)** by John Daulton (Kindle Edition)

★★★★☆ 4.2 out of 5

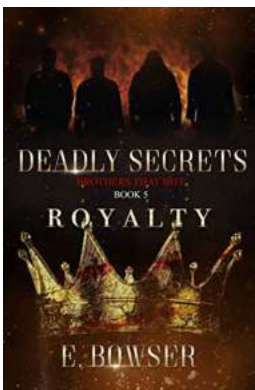
Language	: English
File size	: 3062 KB
Text-to-Speech	: Enabled
Screen Reader	: Supported
Enhanced typesetting	: Enabled
Word Wise	: Enabled
Print length	: 533 pages
Lending	: Enabled
X-Ray	: Enabled



Altin Meade is a sorcerer with a curse. Seeking to avoid a looming doom, he sets his magical sights on the stars—a quest that will likely bring about the very consequence he's seeking to escape.

Far across the galaxy, Ensign Orli Pewter of planet Earth has a looming doom of her own—one of loneliness, depression and, worse, a race of genocidal aliens known as "Hostiles" seeking to destroy humanity. Trapped aboard a spaceship she never asked to be upon, Orli is in a fight for both her life and her sanity.

Worlds apart, Altin and Orli share a destiny, but neither knows the other is alive. The Hostiles know. And they have other plans.



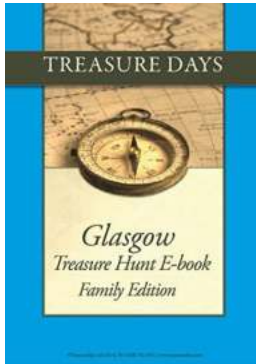
## **Deadly Secrets: Royalty Brothers That Bite**

In the secretive world of royalty, behind the glamour and opulence lies a web of intrigue and mystery. From hidden affairs to scandalous secrets, the lives of royal families...



## **The Galactic Mage: A Brilliant Blend of Fantasy and Science Fiction**

In the vast realm of speculative fiction, often divided into the realms of fantasy and science fiction, it's not every day that you come across a literary work that...



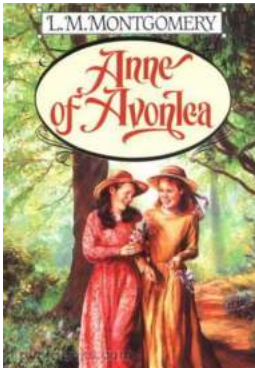
## The Ultimate Family Edition Treasure Hunt From Treasuredays 43 - Fun for the Whole Family!

Are you looking for a fun and exciting activity for the whole family? Search no more! Treasuredays 43 presents the ultimate Family Edition Treasure Hunt that guarantees...



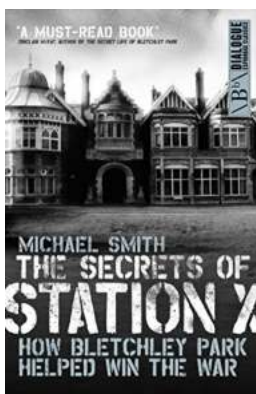
## The Church Hoe Reginald Ward: Unveiling the Scandalous Secrets

The Church Hoe Reginald Ward - a name that has been making headlines recently, leaving many in shock and disbelief. In an era where scandals seem to be the currency of...



## Anne of Avonlea, Anne of the Island, Anne's House of Dreams, Rainbow Valley, and More - The Enchanting World of Anne Shirley

The delightful world of Anne Shirley has captivated readers for generations. From her first appearance in "Anne of Green Gables," Lucy Maud Montgomery's series...



## Unveiling the Secret Heroes: How The Bletchley Park Codebreakers Helped Win The War

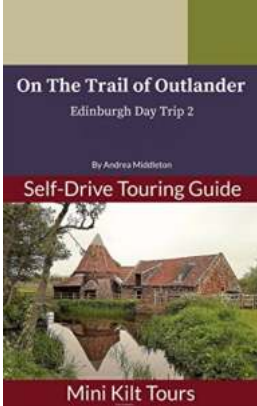
The Second World War was a time of great turmoil and uncertainty. On one side, Adolf Hitler's Nazi Germany and its allies strived for world domination, constantly...





## **Complete Guide To Automating Big Data Solutions Using Artificial Intelligence**

Big data has become an essential aspect of modern business operations. With the massive volume of data generated every day, it is essential to find efficient ways to process...



## **Mini Kilt Tours On The Trail Of Outlander Edinburgh Day Trip**

Are you a fan of the hit TV series Outlander and looking for a unique and immersive experience in Edinburgh? Look no further than Mini Kilt Tours' On The Trail Of...