

Master the Art of Landscape and Figure Composition: A Visual Journey

Creating captivating and dynamic compositions is a crucial skill for any artist, whether you are a painter, photographer, or illustrator. Understanding how to compose your artwork effectively can elevate it to new heights, capturing the attention and imagination of viewers. In this article, we will delve into the world of landscape and figure composition, exploring its principles, techniques, and examples that will inspire and guide you on your creative journey.

What is Landscape and Figure Composition?

Landscape and figure composition refers to the arrangement and organization of elements within a two-dimensional space. It is the intentional placement of objects, figures, lines, colors, and shapes that creates a visually appealing and balanced artwork. Composition plays a pivotal role in guiding the viewers' eyes and evoking certain emotions or narratives.

The Importance of Composition in Art

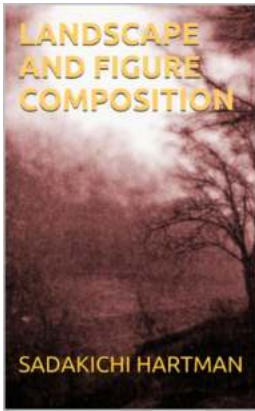
Composition is often considered the backbone of visual art. It can transform an ordinary scene into something extraordinary, leading the viewers' eyes on a visual journey and guiding their interpretation of the artwork. A well-composed artwork can invoke emotions, convey stories, and establish a connection between the artist and the audience. Without a strong composition, even the most technically skilled artwork may fail to captivate its spectators.

Landscape and Figure Composition (Illustrated)

by Plácido María Gil Imirizaldu (Kindle Edition)

★★★★☆ 4.5 out of 5

Language : English



File size	: 35360 KB
Text-to-Speech	: Enabled
Screen Reader	: Supported
Enhanced typesetting	: Enabled
Print length	: 182 pages
Lending	: Enabled
Item Weight	: 14.6 ounces



The Elements of Landscape and Figure Composition

When it comes to landscape and figure composition, several key elements contribute to the overall composition:

1. The Rule of Thirds

The rule of thirds is a classic compositional technique that involves dividing the canvas into a 3x3 grid by placing two horizontal and two vertical lines evenly spaced. By placing the main elements of your composition along these lines or at their intersections, you achieve a balanced and visually engaging composition. This technique can be applied to both landscapes and figure compositions.

2. Leading Lines

Leading lines are lines that draw the viewers' eyes into the artwork, leading them towards the focal point or creating a sense of depth. These lines can be actual objects such as roads, rivers, or fences, or implied lines created by the arrangement of elements, such as the line formed by the outstretched arms of figures. Utilizing leading lines can add a sense of movement and guide the viewers' gaze through the artwork.

3. Color and Contrast

Color and contrast play a crucial role in composition. Bold and contrasting colors can create focal points, establishing visual hierarchy within the artwork. Warm colors generally advance, while cool colors recede, affecting the perceived depth and spatial relationships in a composition. Understanding color theory and how to effectively use color and contrast will enable you to create dynamic and visually appealing compositions.

4. Scale and Proportion

Scale and proportion play a significant role in conveying depth, distance, and perspective in landscape and figure compositions. By accurately representing the relative sizes of objects and figures, you create a sense of realism and dimension. Paying attention to scale and proportion will ensure that your compositions appear balanced and visually convincing.

5. Negative Space

Negative space refers to the empty or unoccupied areas surrounding the main subjects in the composition. It can be used to create visual breathing room, enhance the focus on the main subject, or even serve as a subject itself. Utilizing negative space effectively will enable you to balance the composition and emphasize the main elements.

Examples of Landscape and Figure Compositions

Let's take a look at some iconic artworks that masterfully demonstrate landscape and figure composition:

"Starry Night" by Vincent van Gogh

"Starry Night" is a prime example of how composition can evoke emotions and create a sense of movement. The swirling brushstrokes lead the viewers' eyes on a journey across the canvas, while the placement of the village, cypress tree, and the moon form a dynamic focal point that captures the attention.

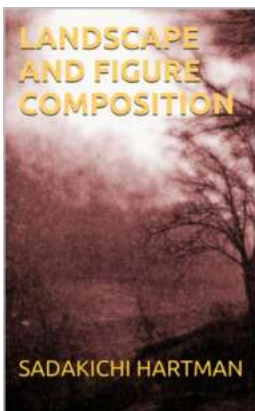


"The Birth of Venus" by Sandro Botticelli

Botticelli's "The Birth of Venus" showcases the impeccable use of scale and proportions in figure composition. The central figure of Venus is gracefully positioned, with her flowing hair and curled toes creating dynamic lines that draw the viewers' eyes. The surrounding figures and landscape elements contribute to the overall harmony and balance of the composition.



Landscape and figure composition is an art form that requires a deep understanding of the principles and techniques involved. By mastering the elements of composition and studying iconic artworks, you can develop your own unique style and create visually compelling compositions. So, take the time to experiment, explore, and let your compositions speak volumes, guiding your viewers on a remarkable visual journey.



Landscape and Figure Composition (Illustrated)

by Plácido María Gil Imirizaldu (Kindle Edition)

★★★★☆ 4.5 out of 5

Language : English

File size : 35360 KB

Text-to-Speech : Enabled

Screen Reader : Supported

Enhanced typesetting : Enabled

Print length : 182 pages

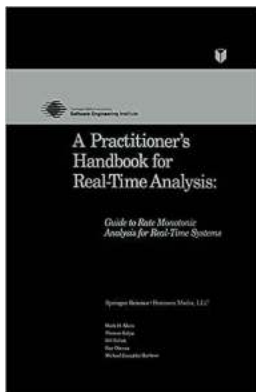
Lending : Enabled

Item Weight : 14.6 ounces



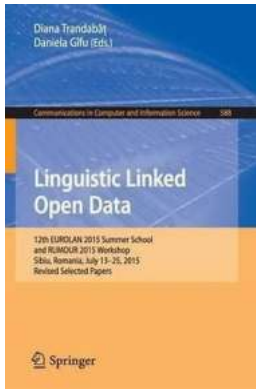
A book on composition. Using photographs of famous paintings, landscapes, figures and drawn illustrations.

Originally published in 1910.



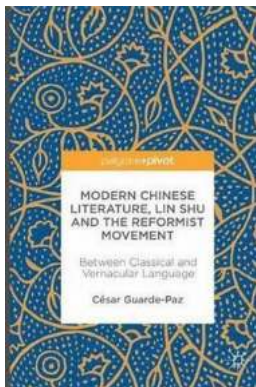
Rate Monotonic Analysis: A Comprehensive Guide for Real-Time Systems

In the world of real-time systems, where accuracy and reliability are critical, rate monotonic analysis (RMA) plays a crucial role. It is a mathematical technique used to...



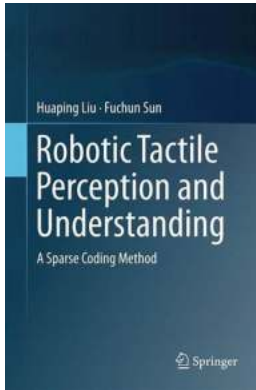
Discover the Inspiring Journey of the 12th EuroLan 2015 Summer School and Rumour 2015 Workshop in Sibiu, Romania this July 13!

The picturesque city of Sibiu in Romania is not only known for its breathtaking landscapes and rich cultural history, but also for hosting some of the most influential events...



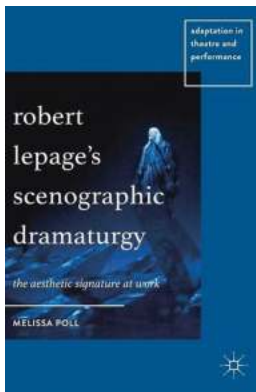
Between Classical And Vernacular Language: Exploring the Richness of Linguistic Traditions

The Dichotomy of Classical and Vernacular Language Language, the foundation of human communication and expression, has evolved and diversified over...



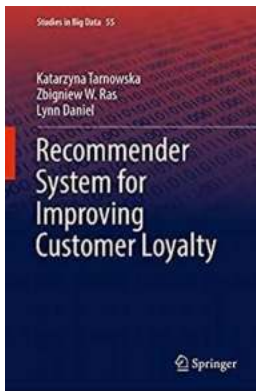
Sparse Coding Method: Unleashing the Power of Efficient Representation

Imagine a world where data can be efficiently represented using only the most essential components. A world where complex datasets can be distilled into sparse...



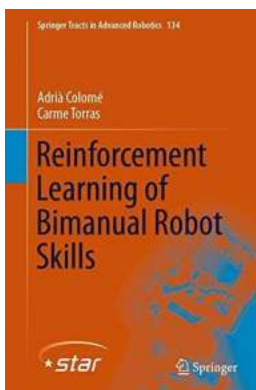
Robert Lepage Scenographic Dramaturgy - A Storyteller's Masterpiece

Robert Lepage, the Canadian playwright, director, and actor, is renowned worldwide for his groundbreaking approach to scenographic dramaturgy....



Recommender System For Improving Customer Loyalty Studies In Big Data

Are you looking for effective ways to improve customer loyalty and maximize your business's success? Look no further! In this article, we will explore the power of...



Unlocking the Potential: Reinforcement Learning Of Bimanual Robot Skills

Robotic advancements have gained significant momentum over the years, transforming various industries by automating complex tasks. Reinforcement...



About the 17th International Conference ICCHP 2020 Lecco, Italy - September 11, 2020

Are you excited about the upcoming 17th International Conference ICCHP 2020? Well, we certainly are! This year, the conference will be held in the beautiful town of Lecco,...