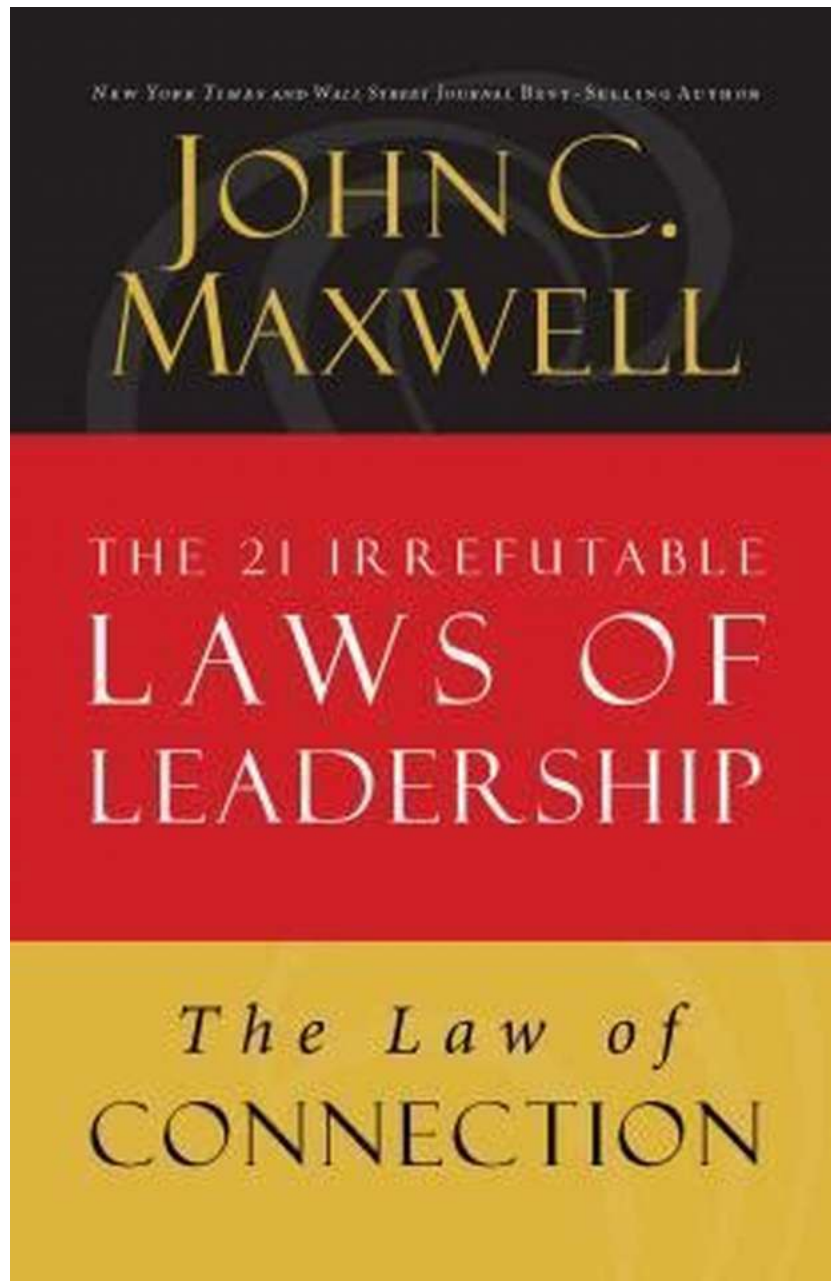
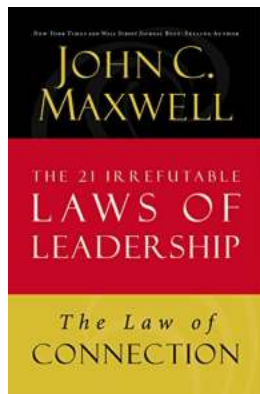


Lesson 10 From The 21 Irrefutable Laws Of Leadership: The Law of Connection



Leadership is a skill that can be learned and developed over time. In his book "The 21 Irrefutable Laws Of Leadership," renowned author and leadership expert John C. Maxwell outlines essential principles to help individuals become effective leaders.

Among these laws, Lesson 10 stands out as one of the most important – The Law of Connection. A leader's ability to connect with others is crucial for building trust, loyalty, and achieving collective success.



Law of Connection: Lesson 10 from The 21 Irrefutable Laws of Leadership

by John C. Maxwell (Kindle Edition)

★★★★☆ 4.6 out of 5

Language	: English
File size	: 772 KB
Text-to-Speech	: Enabled
Screen Reader	: Supported
Enhanced typesetting	: Enabled
Word Wise	: Enabled
Print length	: 21 pages
Paperback	: 50 pages
Item Weight	: 6.4 ounces
Dimensions	: 8.5 x 0.13 x 11 inches



The Power of Connection

Connection is the foundation of any successful relationship, whether it's personal or professional. Leaders who can authentically connect with their team members create an environment that fosters growth, collaboration, and productivity.

To establish a strong connection, leaders must develop empathy, active listening skills, and a genuine interest in people. It involves understanding and relating to individual team members' aspirations, challenges, and values.

When leaders connect with their team on a personal level, they inspire loyalty, motivate individuals to go the extra mile, and build a strong support system that

leads to exceptional performance.

The Key Elements of Connection

At its core, connection is about building trust and fostering relationships. Here are the key elements that leaders should focus on to strengthen their connection with others:

1. Authenticity

To connect effectively, leaders need to be genuine and authentic. Team members can easily sense insincerity, so leaders must strive to match their words with their actions and create an environment of trust and transparency.

2. Communication

Open and clear communication is vital to establish strong connections. Effective leaders should be able to articulate their vision, expectations, and provide constructive feedback. Additionally, they should encourage open dialogue, listen actively, and take into account their team's input.

3. Empathy

Empathy is the ability to understand and share the feelings of others. Leaders who show empathy can connect deeply with their team members, which leads to increased trust and loyalty. By recognizing and addressing the needs and concerns of individuals, leaders create an inclusive and supportive environment.

4. Appreciation

Everyone wants to feel valued and appreciated for their contributions. Leaders should recognize and acknowledge the efforts and achievements of their team members regularly. Small gestures of appreciation go a long way in strengthening the connection and building a positive work culture.

Applying the Law of Connection

Now that we understand the importance of connection, let's explore how leaders can apply the Law of Connection effectively:

1. Invest Time in Building Relationships

Leaders should actively invest time and effort into establishing and nurturing relationships with their team members. This involves getting to know their strengths, weaknesses, and personal aspirations. By showing genuine interest, leaders can boost morale, mentor individuals, and create a sense of belonging.

2. Create a Safe and Inclusive Environment

Leaders must create an environment where team members feel safe to express themselves, share ideas, and take calculated risks. By fostering inclusivity and valuing diversity, leaders can develop a culture of trust, innovation, and high-performance.

3. Be a Role Model

Leaders should lead by example, demonstrating the behaviors and values they expect from their team. By modeling the desired qualities such as integrity, accountability, and resilience, leaders inspire their team to follow suit and mirror these traits.

4. Continuously Develop Emotional Intelligence

Emotional intelligence plays a significant role in establishing connections. Leaders should work on developing self-awareness, social awareness, and effective relationship management skills. By understanding and managing their own emotions and those of their team members, leaders can build stronger connections and resolve conflicts more effectively.

The Benefits of Connecting

When leaders master the Law of Connection, they can experience numerous benefits:

1. Increased Trust and Loyalty

Leaders who connect genuinely with their team build trust, which leads to higher levels of loyalty and commitment.

2. Improved Collaboration and Teamwork

By fostering strong connections, leaders encourage collaboration, open communication, and teamwork among their team members. This results in increased productivity and innovation.

3. Enhanced Employee Engagement

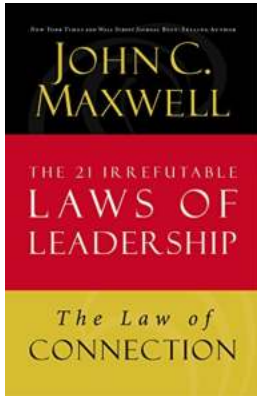
When team members feel connected to their leaders, they are more engaged and motivated to contribute their best efforts to achieve common goals.

4. Greater Influence and Impact

Leaders who connect deeply with others are more influential. They can effectively inspire, influence, and guide their team towards success.

The Law of Connection, Lesson 10 from John C. Maxwell's "The 21 Irrefutable Laws Of Leadership," emphasizes the crucial role of genuine connections in effective leadership. By focusing on authenticity, communication, empathy, and appreciation, leaders can establish strong bonds with their team members, leading to increased trust, loyalty, and collective success.

**Law of Connection: Lesson 10 from The 21
Irrefutable Laws of Leadership**



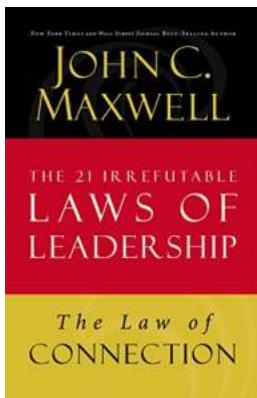
by John C. Maxwell (Kindle Edition)

★★★★☆ 4.6 out of 5

Language : English
File size : 772 KB
Text-to-Speech : Enabled
Screen Reader : Supported
Enhanced typesetting : Enabled
Word Wise : Enabled
Print length : 21 pages
Paperback : 50 pages
Item Weight : 6.4 ounces
Dimensions : 8.5 x 0.13 x 11 inches

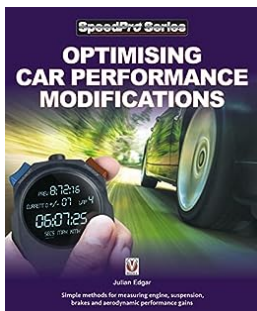


Elizabeth Dole has mastered it. If husband Bob had done the same, he might have become the forty-third president of the United States. It's called the Law of Connection.



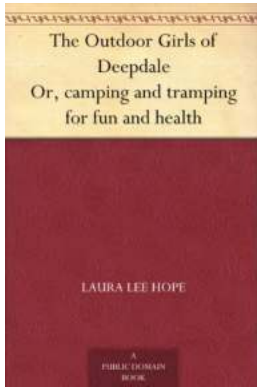
Lesson 10 From The 21 Irrefutable Laws Of Leadership: The Law of Connection

Leadership is a skill that can be learned and developed over time. In his book "The 21 Irrefutable Laws Of Leadership," renowned author and leadership expert John C....



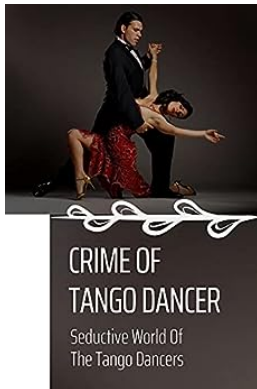
Top 10 Secrets to Ultimate Car Performance Modifications - Unleash the Power!

Are you tired of driving a stock car that lacks the power, speed, and excitement you desire? Well, look no further! In this comprehensive guide, we...



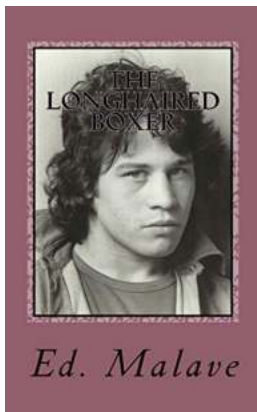
The Outdoor Girls of Deepdale: Camping and Tramping for Fun and Health

Are you ready to embark on an adventure with the Outdoor Girls of Deepdale? If you are a fan of thrilling exploits, captivating mysteries, and the great...



The Seductive World of Tango Dancers: Unveiling the Passion and Elegance of the Tango

The seductive allure of the tango is undeniable. A dance that originated in the late 19th century in the slums of Buenos Aires, Argentina, it has captured the hearts of...



Unveiling the Majestic Longhaired Boxer Ed Malave: The Enigmatic Beauty of a Rare Breed

The world of canines is full of surprises, and just when you think you've seen it all, a rare gem appears. Introducing the captivating and enigmatic Longhaired...



The Comprehensive Care Guide On Fire Belly Newt

If you are in search of an intriguing and unique pet, the Fire Belly Newt is an excellent choice. With its vivid colors and captivating patterns, this little...



Beginners Guide To Start Marketing Via Email In 2021

Are you looking to expand your marketing efforts in 2021? One of the most effective and cost-efficient ways to reach your target audience is through...



The Ballet Action: Unlocking the Mesmerizing World of Graceful Movements and Elegant Expressions

When it comes to captivating forms of art, one cannot underestimate the sheer beauty and elegance of ballet. The enchanting combination of graceful movements, elaborate...