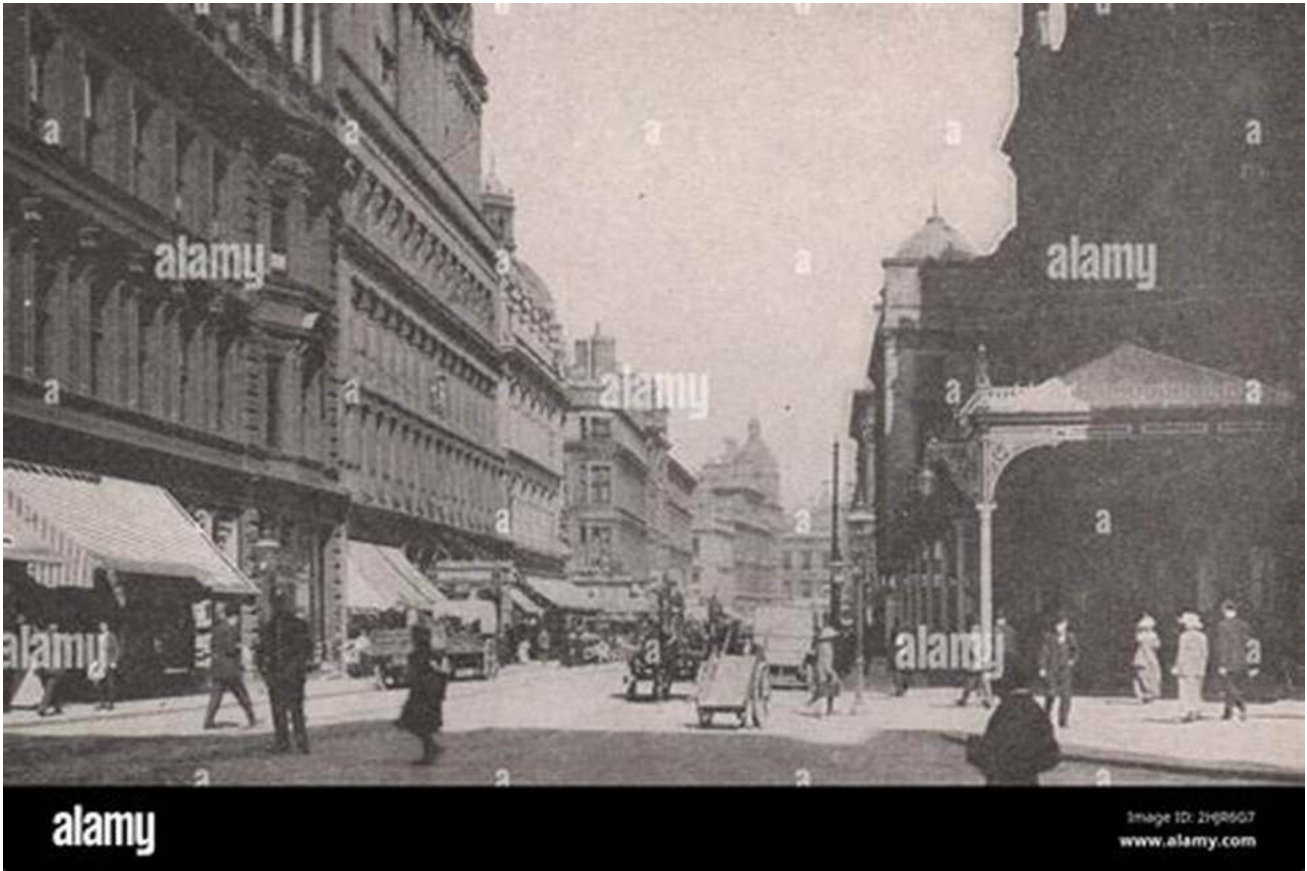


Glasgow Central Station 1923 Operations

Robinson: A Fascinating Journey into the Past

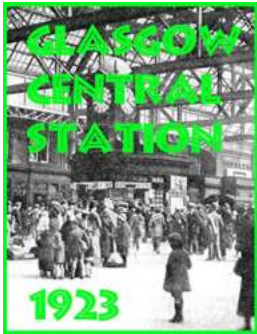


Ever wondered what Glasgow Central Station was like in 1923? Step into the time machine as we take you on a captivating journey back to the operations of Robinson, one of the prominent figures in the station's history.

The Rich Heritage of Glasgow Central Station

Glasgow Central Station, located in the heart of Scotland's largest city, holds a significant place in railway history. Opened in 1879, it has witnessed numerous transformations over the years, with 1923 being a particularly intriguing period.

This year marked the height of Frederick Brigg's tenure as the Chief Architect of the Caledonian Railway, the company responsible for the station's design.



GLASGOW CENTRAL STATION: 1923 OPERATIONS

by D C Robinson (Kindle Edition)

★★★★☆ 4.5 out of 5

Language : English
File size : 4202 KB
Text-to-Speech : Enabled
Screen Reader : Supported
Enhanced typesetting : Enabled
Print length : 21 pages



Enter Alexander Robinson

Alexander Robinson was the Operations Manager of Glasgow Central Station during the 1920s. Known for his remarkable dedication and innovative approach, Robinson played a pivotal role in shaping the station as we know it today. His vision was to create an efficient and welcoming environment for passengers, ensuring smooth operations and delightful experiences.

Revolutionizing Train Timetables

One of Robinson's most notable contributions was the implementation of an advanced train timetable system. In 1923, he introduced an electronic display board on the main concourse that showcased train departures, arrivals, and delays in real-time. This innovation significantly improved the passenger experience, allowing them to plan their journeys more effectively.

NEWTONGRANGE AND EDINBURGH. Time, 45 mins. FARE, 10d.				NEWTONGRANGE TO GOREBRIDGE. Time, 12 mins. FARE, 2d.			
Leave Wav. Bridge		Leave N'wtong'ng		Leave N'wtong'ng		Leave Gorebridge	
6 05	3 45am	7 47b	5 70m	6 48b	5 19c	7 35b	6 45a
7 45b	3 55	9 7b	5 17	8 33b	5 33	8 55b	6 0
8 05	4 10c	9 32b	5 32c	9 9b	5 59	9 30b	6 25
8 25am	4 25	9 42am	5 47	9 38b	6 23	10 0b	6 40
8 50b	4 35am	10 12b	5 57am	10 4	6 33	10 20	6 55
9 20m	4 45	10 42	6 12	10 28	7 3	10 50	7 25
9 40	5 15m	11 2	6 37m	10 58	7 18c	11 20	7 40c
10 10	5 35	11 32m	6 52	11 28	7 29	11 50	7 55
10 25	5 45	11 52	7 7z	11 54	7 39c	12 20	8 5c
10 40	6 5	12 2c	7 32c	12 13c	7 58	12 35c	8 15
11 10m	6 15	12 3z	7 37	12 28	8 23	12 50	8 45
11 25c	6 30c	12 47c	7 52c	12 34c	8 33	1 0c	9 0
11 40	6 45m	1 2m	8 7	12 48	8 53	1 10	9 15
11 50am	6 50c	1 12c	8 17am	1 14	9 18c	1 40	9 40c
12 0	7 10	1 2z	8 27	1 48	9 29	2 10	9 50
12 30m	7 35	1 52m	8 57	2 4c	9 49c	2 25c	10 5c
12 45	7 50	2 12	9 12	2 23	9 58	2 45	10 15
1 0	8 5	2 22z	9 27z	2 38c	10 8c	3 0c	10 25c
1 20am	8 30c	2 37c	9 52c	2 53	10 18	3 15	10 35
1 35	8 45m	2 57	10 2	2 54c	10 48	3 25c	11 0
1 50c	9 0c	3 12c	10 27	3 13	11 13c	3 35	11 20c
2 5	9 10	3 27	10 37c	3 39	11 32c	4 3	11 45c
2 10am	9 30c	3 37am	10 47	4 13		4 35	
2 25	9 30	3 47	11 12	4 29c		4 50c	
2 55m	10 0	4 15	11 42c	4 43		5 5	
3 10	10 25c	4 37	11 57a	4 58c		5 20b	
3 25	10 45b	4 47z		5 13		5 35	

b Ex. Suns.
c Weds. and Sats. only.
o Sats. & Suns. only.

MIDDIE ROAD. Time, 15 minutes. FARE, 4d.				NORTH BERWICK. (Sundays only.) Time, 1 hour 50 mins. FARE, 2/9.			
Lv. Wlloo. Pl.		Lv. Nidd. Rd.		Lv. Wlloo. Pl.		Lv. N. Berwk.	
6 25b	4 10	8 27b	5 47c	9 30	3 30	11 30	5 30
6 50b	4 20c	9 7b	6 2	11 30	5 30	1 30	7 30
7 25b	4 30	9 32b	6 37	1 30		3 30	
7 55b	4 40	10 7b	6 52				
8 30b	5 10	10 25b	7 2c				
9 3	5 20c	10 57	7 12				
9 30	5 30	11 22	7 25				
9 55	5 55c	11 42	7 37				
10 20	6 5	11 57	7 57c				
10 35	6 15	12 30	8 2				
11 0	6 25c	12 42c	8 35c				
11 10c	6 30	12 57	8 42				
11 25	7 0	1 22	9 2				
11 35	7 20	1 32c	9 12c				
11 50	7 35c	1 42	9 17				
12 0c	7 45	1 57	9 52c				
12 15	7 50	2 12	9 57				
12 30	8 20	2 22	10 15				
12 50	8 25c	2 42c	10 22				
1 10c	8 45	2 52	10 32c				
1 30	9 0c	3 25	10 47				
2 0	9 15	3 43	11 12				
2 10c	9 30c	3 52c	11 19				
2 25	9 45	4 2	11 27c				
2 30	10 0c	4 17	11 47c				
2 40	10 20	4 42c	12 7c				
2 50	10 45c	4 45	12 12c				
3 10c		5 2	12 18c				
3 25		5 17					
3 50		5 37					

b Except Sundays.
c Weds. and Sats. only.
o Sats. and Suns. only.
m Via Little France.
z Connects at Hekbank with Bus for Rosewell.

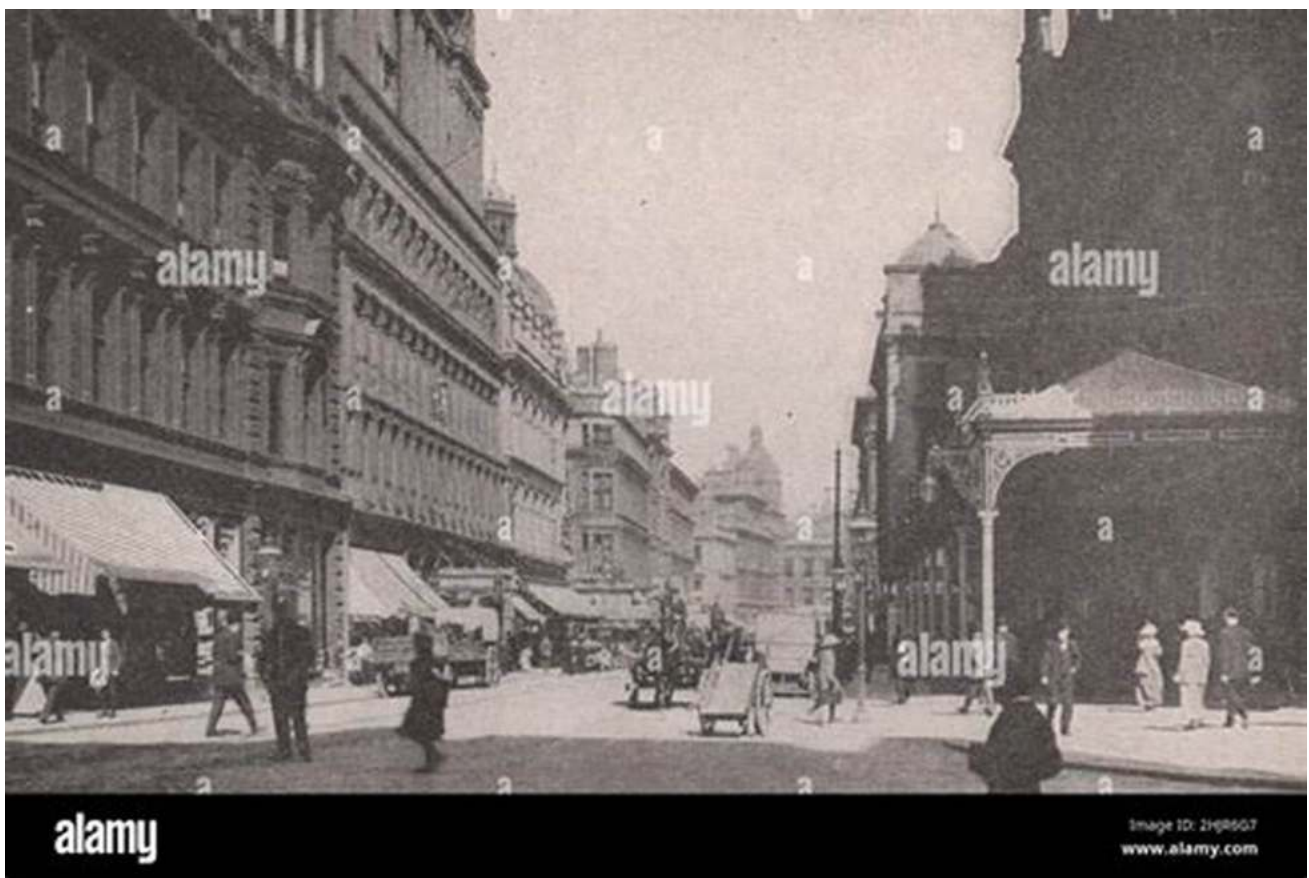
ORMISTON Time, 63 minutes. FARE, 1/4.			
Leave Waterloo Pl.		Leave Ormiston.	
8 30c	5 30	9 40b	6 40
10 20	8 20	11 35	9 30
1 30	10 20c	2 40	11 30c
2 50		4 0	

PATHHEAD Time, 1 hour 5 minutes. FARE, 1/3.			
Leave Wav. Bgo.		Leave Pathhead.	
6 10b	2 15	7 50b	5 15m
6 40c	3 35	10 0b	7 10
8 40b	5 25	11 15	8 20am
9 30	7 0	12 30c	8 40c
11 30c	8 45	2 5m	10 0
12 40		4 5	11 5c
1 50c		4 50r	

r Except Sats. and Suns.
m Ex. Sats.
† Connects at Tranent with Bus for Haddington.

Glasgow Central Station: A Haven of Art and Culture

Under Robinson's leadership, Glasgow Central Station also became a hub for art and culture. Inspired by the success of London's Underground poster campaign, he collaborated with renowned artists to create stunning advertisements promoting Scotland's scenic beauty and cultural heritage. These vibrant artworks adorned the station's walls, captivating passengers and adding a touch of elegance to the bustling atmosphere.



The Iconic Clock Tower

No article about Glasgow Central Station in 1923 would be complete without mentioning the iconic clock tower. Standing at an impressive height of 85 meters, the tower became a prominent symbol of the station's grandeur. It was through

Robinson's vision that this architectural marvel was erected, striking a chord with both locals and visitors alike.



The Enduring Legacy of Alexander Robinson

Robinson's tenure as the Operations Manager of Glasgow Central Station was undoubtedly transformative. His commitment to excellence and customer satisfaction laid the foundation for the station's future success. Today, Glasgow Central Station remains not only a vital transportation hub but also a fascinating

glimpse into the city's past, thanks to the visionary efforts of Alexander Robinson and his team.

A Glimpse into the Past

So, the next time you pass through Glasgow Central Station, take a moment to appreciate the history that has shaped this architectural masterpiece. Imagine the sights and sounds of 1923 as you walk along its platforms and soak in the remarkable atmosphere. Glasgow Central Station truly is a testament to the enduring beauty of railway heritage.

In , Glasgow Central Station's operations under Alexander Robinson during 1923 were truly remarkable. The innovations he introduced, such as the advanced train timetable system and the integration of art and culture, left an indelible mark on the station's history. Robinson's contributions, coupled with his visionary approach, continue to make Glasgow Central Station a cherished historical landmark.



GLASGOW CENTRAL STATION: 1923

OPERATIONS by D C Robinson (Kindle Edition)

★★★★☆ 4.5 out of 5

Language : English

File size : 4202 KB

Text-to-Speech : Enabled

Screen Reader : Supported

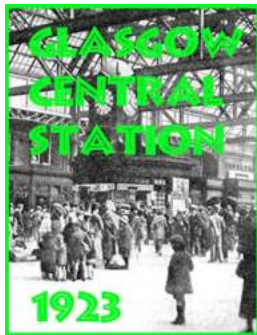
Enhanced typesetting : Enabled

Print length : 21 pages



Glasgow Central Railway Station - London, Midland and Scottish (LMS) Railway, passenger traffic routes and services, the station and traffic arrangements,

excerpted from Railway Magazine, 1923, 20 pages.



Glasgow Central Station 1923 Operations Robinson: A Fascinating Journey into the Past

Ever wondered what Glasgow Central Station was like in 1923? Step into the time machine as we take you on a captivating journey back to the operations of Robinson,...



The Henhouse Ken Reynolds: A Tranquil Haven for Nature Lovers

Imagine waking up to the soothing sounds of nature, surrounded by lush greenery and the gentle clucking of happy hens. Nestled in the idyllic countryside, The Henhouse Ken...



Quick Simple Instructions For 22 Cool Projects

Are you looking for some fun and creative projects to tackle? Look no further! In this article, we will provide quick and simple instructions for 22 cool projects that...

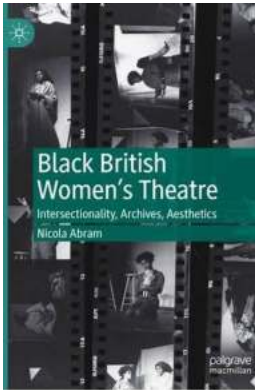
 AVITOPIA
Birds of Argentina



Wolfgang J. Daunisch

Discover the Stunning Avitopia Birds of Argentina: A Guide to Argentina's Exquisite Bird Species

The Diverse Birdlife of Argentina Avitopia birds of Argentina, bird species in Argentina, diverse birdlife in Argentina, bird watching in Argentina Argentina, a...



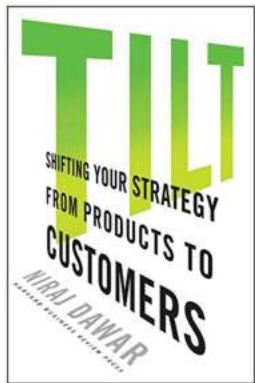
The Phenomenon of Black British Women Theatre: Exploring Intersectionality, Archives, and Aesthetics

In recent years, the world of British theatre has seen an exciting emergence of voices and perspectives that have long been marginalized. Among these voices, the contributions...



How Instagram and Facebook Make Money: The Secrets Behind Their Success

Instagram and Facebook have become an integral part of our daily lives. We use them to connect with friends and family, discover new products and services, and even keep up...



Tilt Shifting Your Strategy From Products To Customers

In today's highly competitive business landscape, understanding the needs and preferences of your customers is paramount to building a successful...



Charlie Numbers And The Woolly Mammoth: An Epic Adventure

Journey into the Ancient Wilds Get ready to embark on a thrilling adventure with Charlie Numbers and the Woolly Mammoth! In the latest installment of the...

