

Exploring Landscape Interfaces: Preserving Cultural Heritage in a Changing World

Landscape interfaces play an integral role in preserving our cultural heritage in the face of rapidly changing landscapes. From ancient ruins to traditional villages, these sites offer a glimpse into our shared history and provide a sense of identity and continuity. However, with increasing urbanization, industrialization, and climate change, these landscapes are constantly evolving, posing new challenges for their conservation and management.

Landscape Interfaces and Cultural Heritage

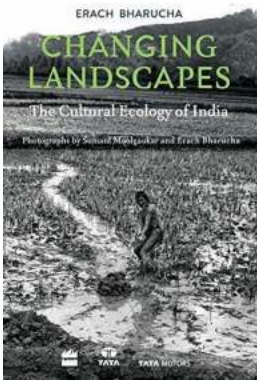
Our landscapes are not just a backdrop to human activities; they are an essential part of our cultural heritage. They bear witness to the evolution of civilizations, the ingenuity of our ancestors, and the interplay between nature and human intervention. Landscape interfaces are the meeting points where tangible and intangible cultural heritage converge, where the past and the present coexist, and where our connection with the land and our roots is reinforced.

These interfaces can take various forms, such as archaeological sites, historical towns, cultural landscapes, or natural reserves. Each of these spaces tells a unique story and harbors distinctive qualities. Some may hold religious significance, while others may serve as reminders of political or social events. Regardless of their nature, these landscapes represent a significant part of our collective memory and should be safeguarded for future generations.

Landscape Interfaces: Cultural Heritage in Changing Landscapes (Landscape Series Book 1)

by Germán Kratochwil (2003rd Edition, Kindle Edition)

★★★★★ 5 out of 5



Language	: English
File size	: 12144 KB
Text-to-Speech	: Enabled
Screen Reader	: Supported
Enhanced typesetting	: Enabled
Word Wise	: Enabled
Print length	: 426 pages
Item Weight	: 1.01 pounds
Dimensions	: 5.55 x 1.18 x 8.31 inches



The Threats to Landscape Interfaces

In today's fast-paced world, landscape interfaces face numerous threats that endanger their preservation and perpetuation. Climate change is altering ecosystems, causing shifts in biodiversity, and increasing the frequency and intensity of extreme weather events. Rising sea levels, melting glaciers, and desertification jeopardize coastal landscapes, archaeological sites, and fragile ecosystems.

Furthermore, rapid urbanization and industrial development often prioritize economic growth at the expense of cultural heritage. Historic landmarks and traditional villages are being demolished to make way for modern architecture and infrastructure projects. The loss of these landscapes not only erases our history but also weakens our sense of identity and belonging.

Moreover, the globalization of culture and the influence of mass tourism often result in a commodification of heritage sites. Traditional practices and customs are replaced by tourist-oriented spectacles, diluting their authenticity and meaning. The delicate balance between preservation and development must be maintained to ensure the longevity and integrity of our cultural landscapes.

Preserving Landscape Interfaces: A Multi-faceted Approach

Preserving landscape interfaces requires a comprehensive and multidisciplinary approach that encompasses cultural, environmental, and socioeconomic dimensions. Conservation efforts must involve local communities, experts, policymakers, and international organizations to ensure the effective management of these landscapes.

Identifying and documenting landscape interfaces is the first step towards their preservation. Conducting surveys, mapping features, and recording oral histories help create a comprehensive inventory of cultural heritage sites. This information serves as a basis for monitoring changes and potential threats.

Engaging local communities is vital in achieving sustainable conservation. Communities should be involved in decision-making processes, as their knowledge and attachment to the land are invaluable resources. This collaboration fosters a sense of ownership, promotes responsible tourism, and supports the transmission of intergenerational knowledge.

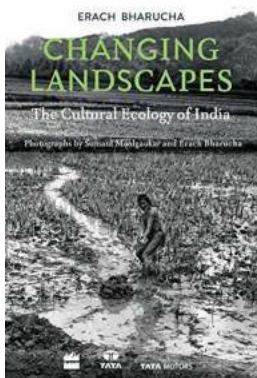
Developing innovative strategies, such as the use of new technologies, can aid in the management of landscape interfaces. Drones, 3D mapping, and virtual reality can assist in monitoring, documenting, and visualizing these sites. This allows for better planning, risk assessment, and dissemination of information to a wider audience.

The Role of Education and Awareness

Education and awareness play a crucial role in safeguarding landscape interfaces. By promoting cultural heritage appreciation among the younger generations, we can ensure the continuation of traditions, practices, and the respect for these sites.

Interactive educational programs, workshops, and exhibitions can bridge the gap between theory and practice. Preservation organizations can collaborate with schools, universities, and local institutions to create engaging learning experiences. This fosters a sense of wonder, curiosity, and responsibility towards our cultural heritage.

Landscape interfaces are cultural treasures that deserve our utmost attention and care. They embody our collective memory, strengthen our identity, and offer us a glimpse into our ancestors' world. By adopting a multidisciplinary approach, involving communities, implementing new technologies, and promoting education, we can ensure the preservation of our cultural landscapes in the face of ever-changing environments. Together, we can protect our heritage and leave a lasting legacy for future generations.



Landscape Interfaces: Cultural Heritage in Changing Landscapes (Landscape Series Book 1)

by Germán Kratochwil (2003rd Edition, Kindle Edition)

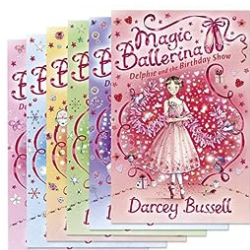
★★★★★ 5 out of 5

Language	: English
File size	: 12144 KB
Text-to-Speech	: Enabled
Screen Reader	: Supported
Enhanced typesetting	: Enabled
Word Wise	: Enabled
Print length	: 426 pages
Item Weight	: 1.01 pounds
Dimensions	: 5.55 x 1.18 x 8.31 inches



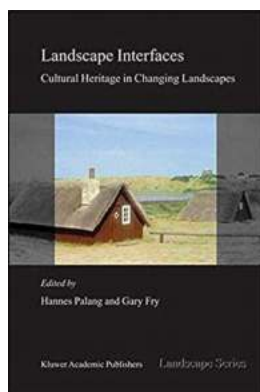
This book has been initiated by the workshop on Cultural heritage in changing landscapes, held during the IALE (International Association for Landscape

Ecology) European Conference that started in Stockholm, Sweden, in June 2001 and continued across the Baltic to Tartu, Estonia, in July. The papers presented at the workshop have been supported by invited contributions that address a wider range of the cultural heritage management issues and research interfaces required to study cultural landscapes. The book focuses on landscape interfaces. Both the ones we find out there in the landscape and the ones we face while doing research. We hope that this book helps if not to make use of these interfaces, then at least to map them and bridge some of the gaps between them. The editors wish to thank those people helping us to assemble this collection. First of all our gratitude goes to the authors who contributed to the book. We would like to thank Marc Antrop, Mats Widgren, Roland Gustavsson, Marion Potchin, Barbel Tress, Tiina Peil, Helen Soovali and Anu Printsman for their quick and helpful advice, opinions and comments during the different stages of editing. Helen Soovali and Anu Printsman together with Piret Pungas - thank you for technical help.



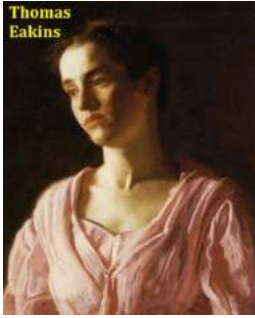
Magic Ballerina - Experience the Enchanting World of Dance

Are you ready to enter the mesmerizing world of dance where graceful movements transport you to a realm of enchantment? Welcome to the captivating universe of Magic...



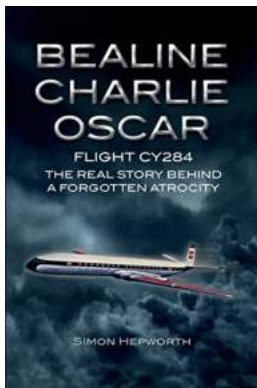
Exploring Landscape Interfaces: Preserving Cultural Heritage in a Changing World

Landscape interfaces play an integral role in preserving our cultural heritage in the face of rapidly changing landscapes. From ancient ruins to traditional villages, these...



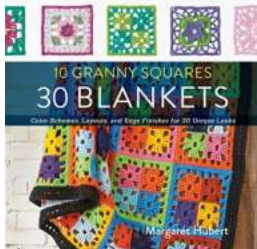
Unearthing the Masterpieces: Dive into the 125 Color Paintings of Thomas Eakins, the Enigmatic American Artist

Thomas Cowperthwait Eakins, an extraordinary American artist born in 1844, left an indelible mark on the world of art with his vivid and exquisite paintings. Known for his...



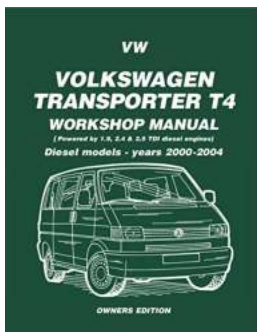
Flight Cy284: The Real Story Behind Forgotten Atrocity

The date was July 15, 2012. A seemingly ordinary day for many, but little did anyone know that it would forever be etched in the memories of those involved in the tragic...



Color Schemes Layouts And Edge Finishes For 30 Unique Looks

The choice of color schemes, layouts, and edge finishes can greatly impact the overall aesthetic appeal of any space. Whether you are renovating your home, designing a new...



VW Transporter T4 Workshop Manual Diesel 2000-2004: The Ultimate Guide for Diesel Models

Are you a proud owner of a VW Transporter T4 Diesel model from 2000 to 2004? Do you want to have a comprehensive workshop manual that will enable you...



Fortune Telling Self Help: Unleash Your Hidden Potential and Seize Control of Your Destiny!

Do you often find yourself wondering what the future holds? Are you keen on uncovering your unique purpose in life? Look no further! With the help of fortune telling...



Discover the Inspiring Journey of Shailene Woodley: From Divergent to Tris - Unveiling the True Passion Behind the Star

When it comes to rising stars in the entertainment industry, Shailene Woodley is a name that cannot be overlooked. With her exceptional talent, undeniable charm, and...