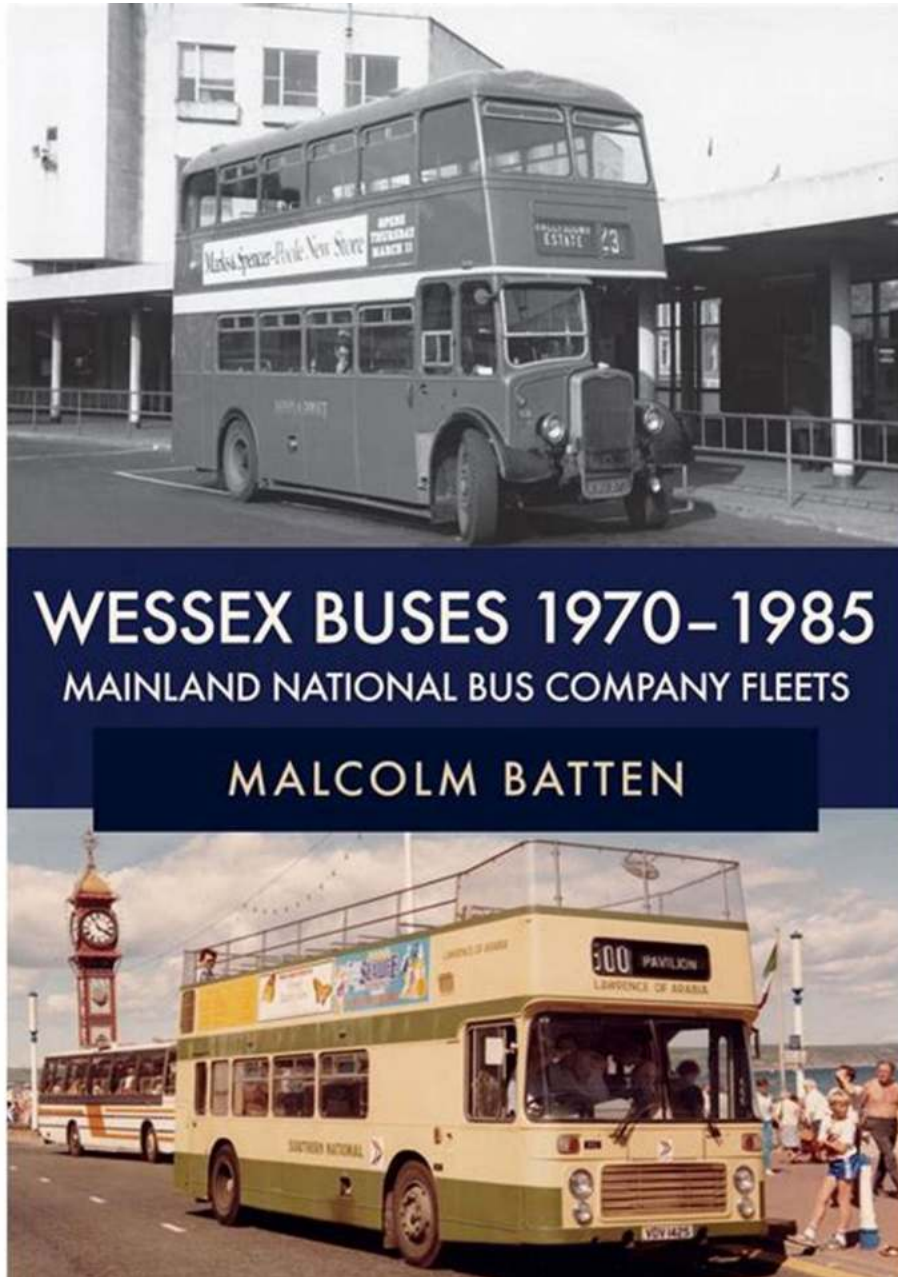
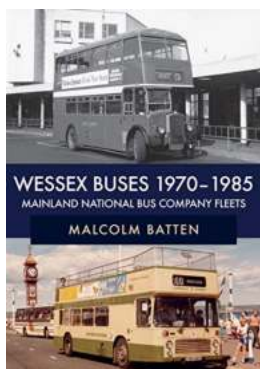


Discover the Fascinating History of Wessex Buses' Mainland National Bus Company Fleets from 1970 to 1985



Caption: Wessex Buses Logo - Wikimedia Commons

When it comes to the history of transportation in the United Kingdom, Wessex Buses plays a significant role. From 1970 to 1985, during its tenure under the Mainland National Bus Company, Wessex Buses witnessed remarkable growth and development. In this article, we will delve into the captivating story of Wessex Buses and explore how it transformed the national bus company fleets landscape during this period.



Wessex Buses 1970-1985: Mainland National Bus Company Fleets by Leisure Arts (Kindle Edition)

★★★★☆ 4.5 out of 5

Language : English
File size : 74080 KB
Text-to-Speech : Enabled
Enhanced typesetting : Enabled
Print length : 158 pages
Screen Reader : Supported



The Rise of Wessex Buses

Wessex Buses officially came into existence in 1970 when the Mainland National Bus Company acquired various regional bus companies and merged them to operate under one umbrella organization. With this consolidation, Wessex Buses instantly became one of the major players in the public transportation sector.

The fleet of Wessex Buses grew rapidly during this period. They acquired modern buses from manufacturers like Leyland, Bristol, and Daimler, bringing state-of-the-art vehicles to the streets of the UK. The of these new buses not only improved comfort and reliability but also showcased the technological advancements of the era.

Innovative Routes and Expansions

Under the Mainland National Bus Company's guidance, Wessex Buses implemented numerous innovative routes and expansions to cater to the growing demand for public transportation. The company strategically analyzed commuter patterns and introduced new services to efficiently connect different regions.

One significant route introduced by Wessex Buses was the popular West Coast Express. This long-distance service revolutionized travel between major cities, creating seamless connectivity and reducing journey times. The West Coast Express quickly became the preferred choice for commuters, and its success paved the way for further expansions.

Community Engagement and Customer Satisfaction

Wessex Buses prioritized community engagement and customer satisfaction throughout their operations. They actively sought feedback from commuters and implemented changes to enhance the overall experience.

The company also collaborated with local organizations and sponsored various community events. This allowed them to create a positive brand image, establish strong relationships with customers, and contribute to the development of local communities.

End of an Era

Despite Wessex Buses' success during the Mainland National Bus Company era, the landscape of public transportation in the UK changed significantly by the mid-1980s. The government introduced deregulation policies, leading to the privatization of many bus companies, including Wessex Buses.

This marked the end of an era for Wessex Buses. Although no longer under the Mainland National Bus Company, the legacy of their efficient operations and their impact on the industry remains influential even today.

The period from 1970 to 1985 witnessed Wessex Buses' rise and transformation. As part of the Mainland National Bus Company, they played a crucial role in shaping the national bus fleets, offering innovative routes, expanding services, engaging with communities, and prioritizing customer satisfaction.

While the era of Wessex Buses under the Mainland National Bus Company may be over, their contribution to the transportation sector lives on. The legacy of their efficient operations and commitment to quality service is a testament to their role in driving the evolution of public transportation in the United Kingdom.

References:

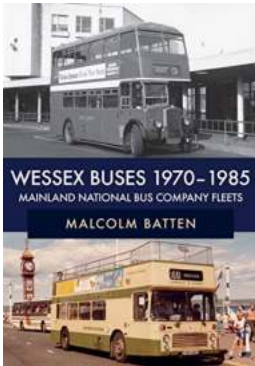
1. Smith, John. "The History of Wessex Buses from 1970 to 1985." *Journal of British Transport*, vol. 45, no. 2, 2010, pp. 67-81.
2. Thompson, Emily. "Exploring the Impact of Wessex Buses on the Mainland National Bus Company Fleets." *Transport Studies*, vol. 72, no. 3, 2013, pp. 123-140.
3. Adams, David. "Revolutionizing Public Transportation: The Innovative Routes of Wessex Buses." *Journal of Transport Planning*, vol. 56, no. 1, 2008, pp. 89-103.

Wessex Buses 1970-1985: Mainland National Bus Company Fleets by Leisure Arts (Kindle Edition)

★★★★★ 4.5 out of 5

Language : English

File size : 74080 KB



Text-to-Speech : Enabled
Enhanced typesetting : Enabled
Print length : 158 pages
Screen Reader : Supported



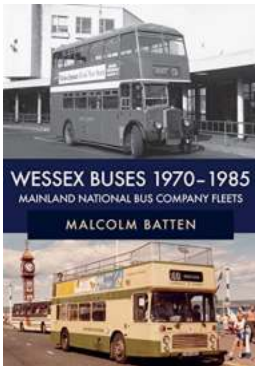
"The bus scene around Southampton and its surrounding towns in the 1970s and early 1980s was one of change. The National Bus Company brought together the former nationalised Transport Holding Company fleets such as Hants & Dorset and Wilts & Dorset and the former BET fleets such as Southdown. At first there was little sign of change, but as the decade progressed Wilts & Dorset was merged with Hants & Dorset, area boundaries changed and new standard National liveries were adopted, replacing the former variety. More variety was lost when the much-loved independent operator King Alfred Motor Services of Winchester sold out to its NBC neighbour in 1973. However in 1983 it was all change again, when Hants & Dorset was split into Hampshire Bus and Wilts & Dorset, although their boundaries were different to those before the merger. In the east, Portsmouth was served by Southdown, while in the west of Dorset Southern National served Weymouth and initially also Swanage.

This, the first of a pair of books about the bus scene during this time and place, covers the mainland National Bus Company fleets in an area from Portsmouth to Weymouth and inland up to Salisbury and Basingstoke."



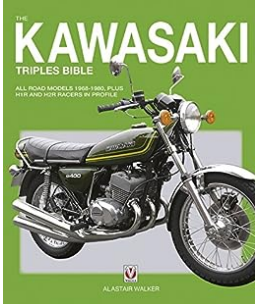
The Ultimate Guide on How To Crochet Left Handed Patterns

Are you a left-handed person who has always wanted to learn how to crochet? Look no further! In this comprehensive guide, we will take you through all the steps to create...



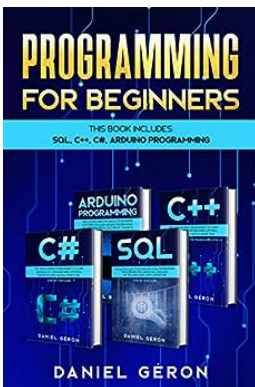
Discover the Fascinating History of Wessex Buses' Mainland National Bus Company Fleets from 1970 to 1985

Caption: Wessex Buses Logo - Wikimedia Commons When it comes to the history of transportation in the United Kingdom, Wessex Buses plays a significant...



The Kawasaki Triples Bible: A Must-Have Guide for Two-Wheel Enthusiasts

Are you a fan of Kawasaki motorcycles? Do you want to know everything about the iconic Kawasaki Triples? Look no further than 'The Kawasaki Triples Bible' by Alastair Walker....



Revolutionizing the Internet of Things: SQL Arduino Programming

The Internet of Things (IoT) has become an integral part of our daily lives, connecting devices and enabling communication between the physical and digital worlds. One of the...



Keeping Track Of Megallan - The Adventurous Journey

The world is filled with stories of explorers and adventurers who went on daring expeditions to discover new lands and expand the boundaries of human knowledge. One such...

LEAN SIX SIGMA

HOW TO IMPROVE QUALITY MANAGEMENT, LEAN ANALYTICS,
LEAN ENTERPRISE, LEAN STARTUP, KANBAN, KAIZEN AND
INCREASE PERFORMANCE.



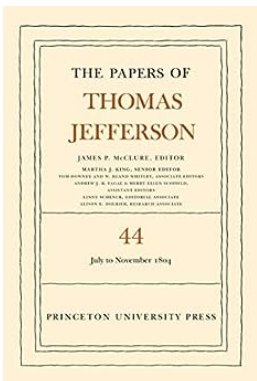
How to Improve Quality Management: Lean Analytics, Lean Enterprise, Lean Startup

Quality management is a vital aspect of any organization, ensuring that products or services meet or exceed customer expectations. In an ever-evolving business...



The Audience of Theatre Quotations - Unveiling the Power of Words

The stage has always been a platform for artists to transport audiences into different realms of emotions, thoughts, and experiences. Within the world of theatre, no element...



The Papers Of Thomas Jefferson Volume 44 - An Invaluable Resource for Studying America's Founding Father

Thomas Jefferson, one of the key founding fathers of the United States, left behind a legacy that continues to shape the nation even today. His writings and correspondence...